

CECOCO

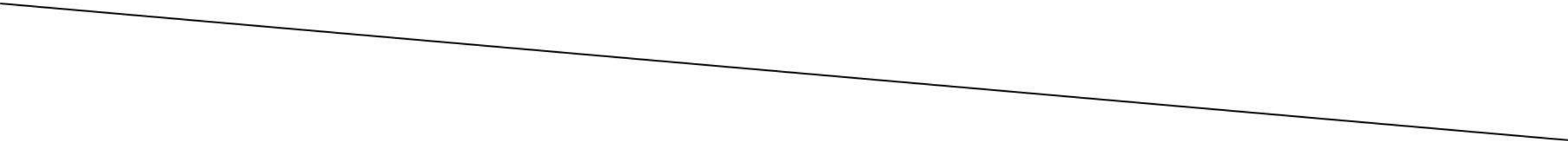
ArtMorph

Redefining Illumination

Living Walls. Immersive Stories



Contents

- About CECOCECO**
 - ArtMorph**
 - ArtMorph Mini**
 - ArtMorph Edge**
 - Scenario Showcases**
 - Specifications**
- 

About CECOCECO

Where Exclusivity Meets Aesthetic in Captivating Illumination

CECOCECO was created by a visionary team of pioneers from the heart of the lighting and display industry.

Drawing upon years of experience from our previous venture as founders of ROE Visual, alongside a deep-rooted passion for innovation, we are set to create products that will change the way people perceive and interact with lights and visuals.

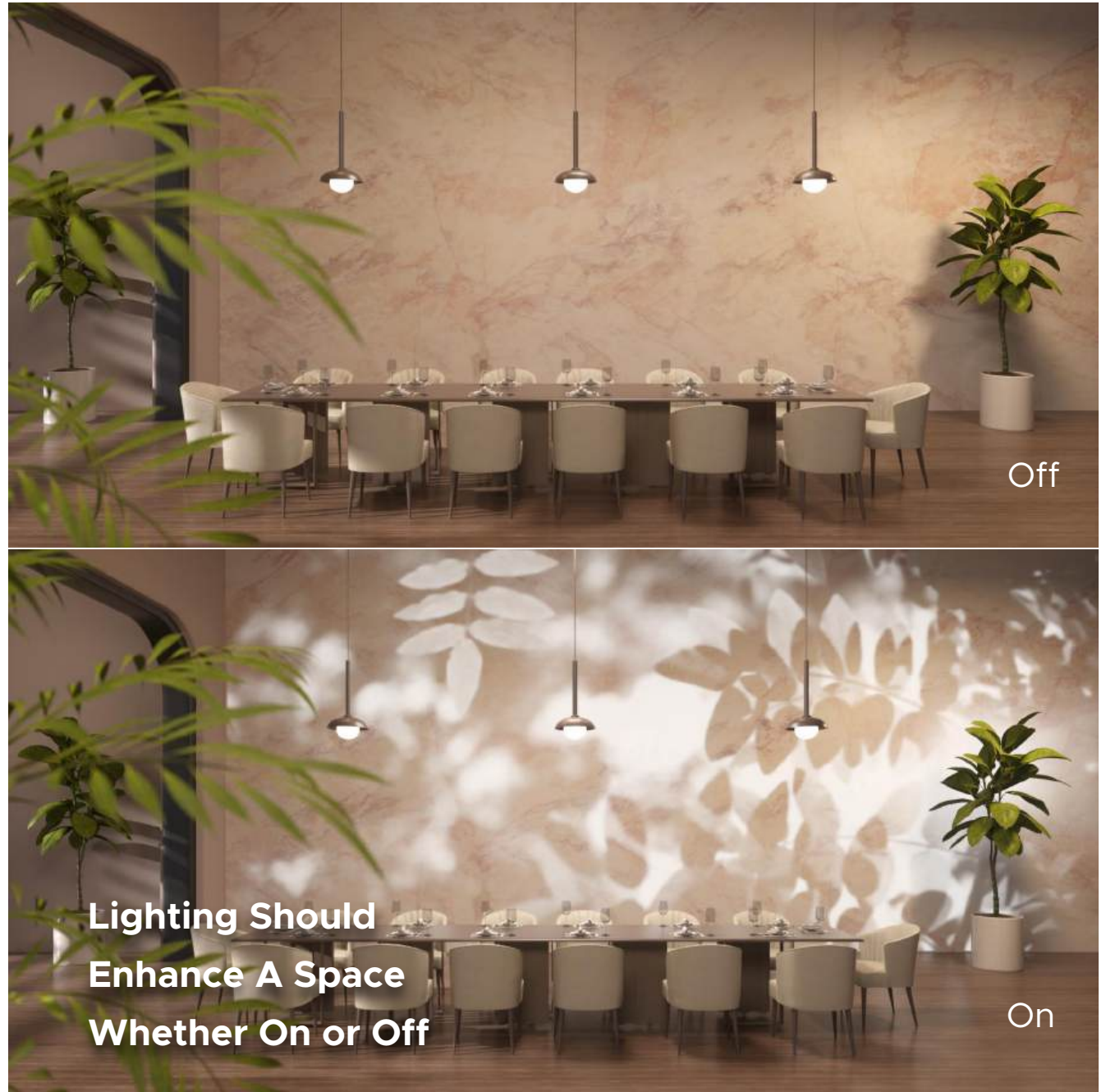
We recognized that lighting and displays could transcend mere functionality and evolve into artistic expression. At CECOCECO, we envisioned a future where every space, whether it be a concert hall, a corporate office, a retail store, or a public park, could become a canvas for immersive and awe-inspiring visual storytelling.



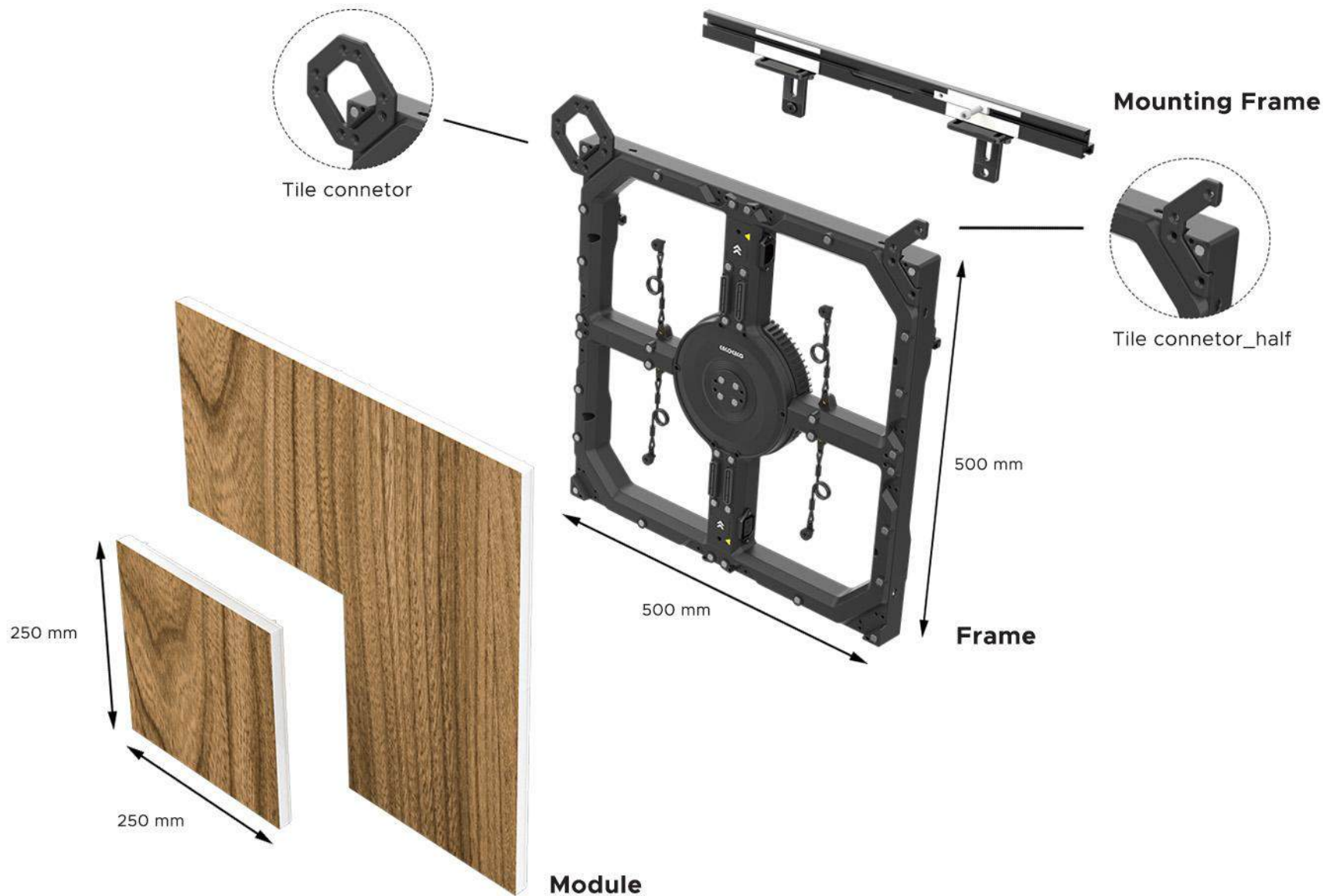
ArtMorph

Blend In & Stand Out

Lighting should enhance a space whether on or off. ArtMorph - a luminous wall panel that integrates animated LED displays with natural textures. It is a revolutionary product that not only provides stunning illumination but also blends harmoniously with its surroundings even when inactive.



Product Exploded View



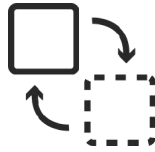
Key Features

ArtMorph

Blend In & Stand Out



Customizable
Surface



Replaceable
Covers



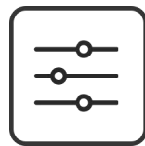
Animated
LED Display



Low Power
Consumption



Easy Installation
and Maintenance



Intuitive Control



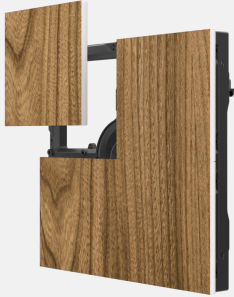
Sustainable
Materials



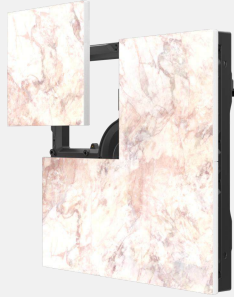
5-Year Warranty

Customizable Surface

200 + texture collections including wood, stone, textile, and metal



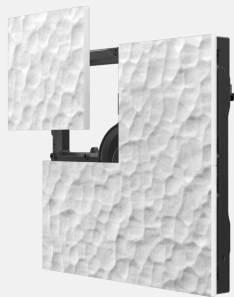
Wood collections



Stone collections

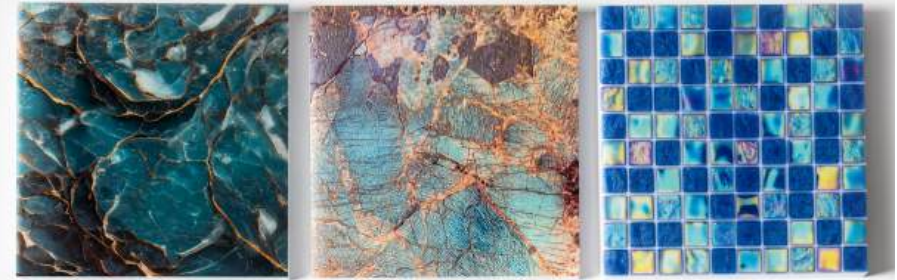


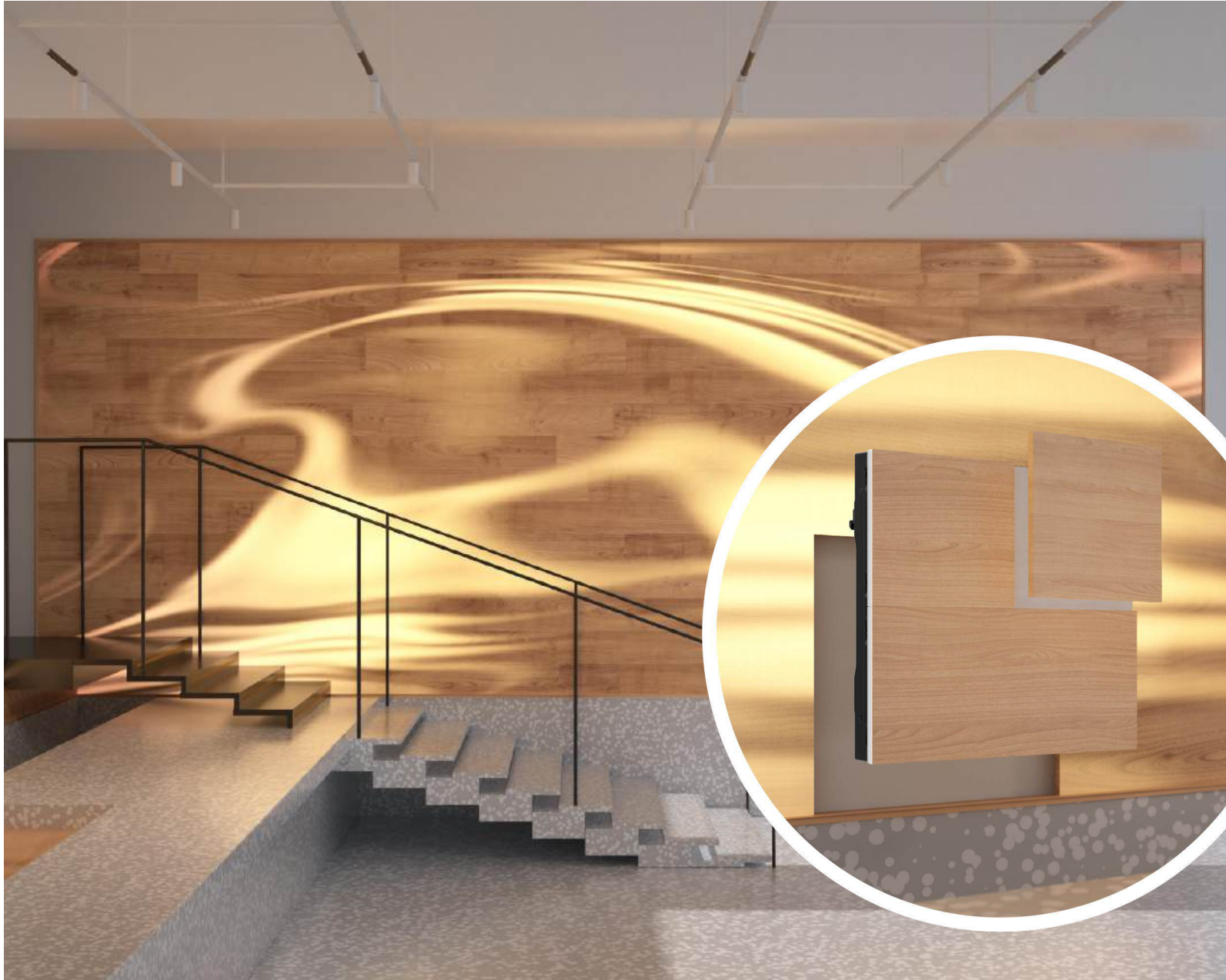
Textile collections



Metal collections

Customized patterns for unique designs





Easily Replaceable Covers

The ability to easily replace covers is a significant advantage, especially for hotels and retail settings, allowing for quick and cost-effective updates to match changing decor or branding.



Animated LED Display

Provides crisp and clear visuals, capable of displaying vibrant and dynamic lighting, as well as video and text.



Low Power Consumption

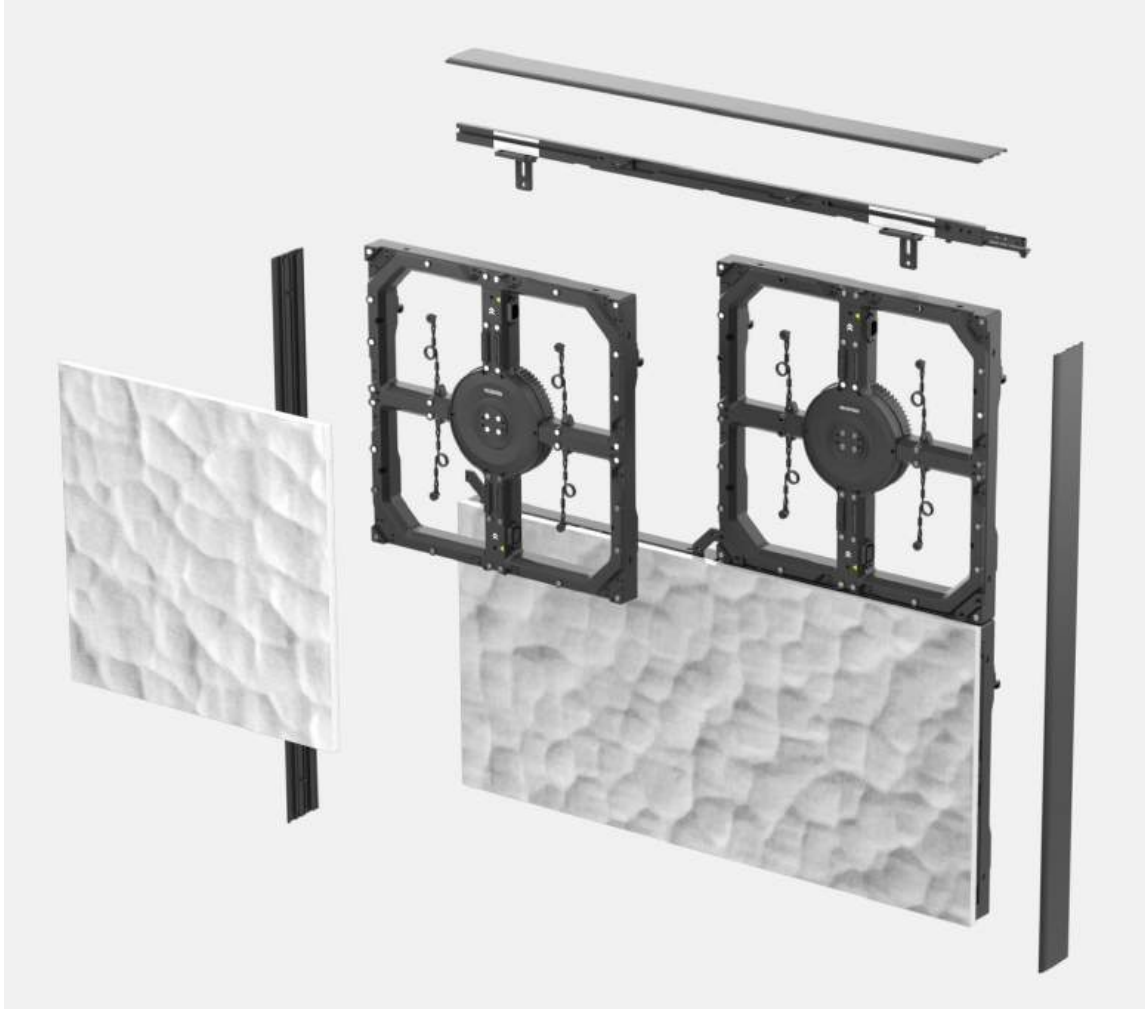
The average operational consumption of ArtMorph is 60 watts per tile, and the standby consumption is 2.5 watts per tile.

ArtMorph remains beautiful even when powered off, reducing the need to keep it constantly on. Its intelligent design allows for clever use of the screen, blending beautiful covers with partial lighting to convey stunning visuals while saving energy.

*The maximum power consumption of ArtMorph is 120W per tile, with full white and max 4500 nits brightness.



Easy Installation and Maintenance



Set Up

Simply mount the frame onto the wall, attach panels on the frame with built-in power magnets, and you are all set.



Front Access Repair

The modular design allows for quick and easy maintenance and repairs from the front of the installation, reducing downtime and maintenance costs.

Intuitive Control

Easy Control

User-friendly interface for managing settings and content.

- Flexible control devices
- Pre-set dynamic content & lighting effects
- Synchronize remotely



Content Design Ability

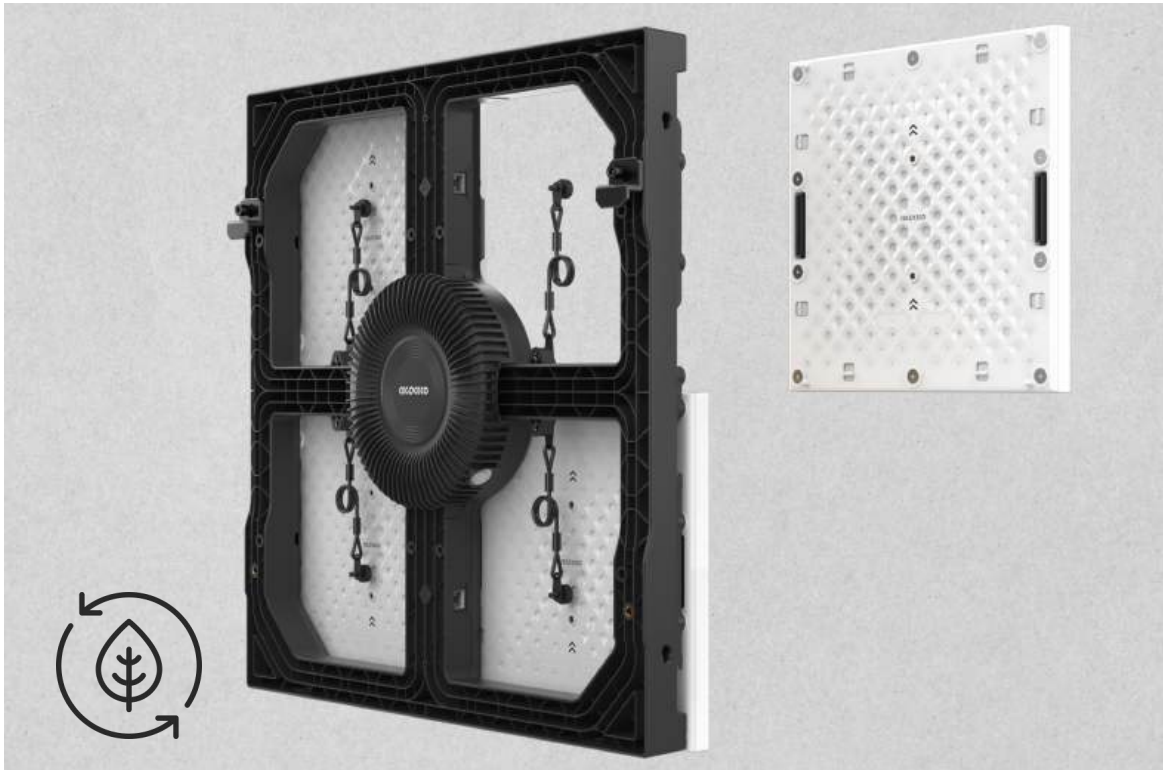
Enables users to create and customize content.

- Dual HDMI Inputs
- MP4 for video content

We Care, We Act

Bio-Based Material

The back shell of ArtMorph panels is crafted from 100% bio-based, carbon-neutral materials. Entirely degradable, these panels align with the natural cycle - a proud step towards a greener planet.



Recycle, Reuse, Respect

Our dedication to the Earth extends to our packaging - we use fully recycled materials, turning waste into worth. With each package you receive, you're contributing to a major change.



Long-Term Assurance

5-year Warranty

With a 5-year manufacturer warranty and the flexibility to update your aesthetic by simply replacing the covers while retaining the core LED display, ArtMorph delivers a cost-effective solution for space transformation.

5
year



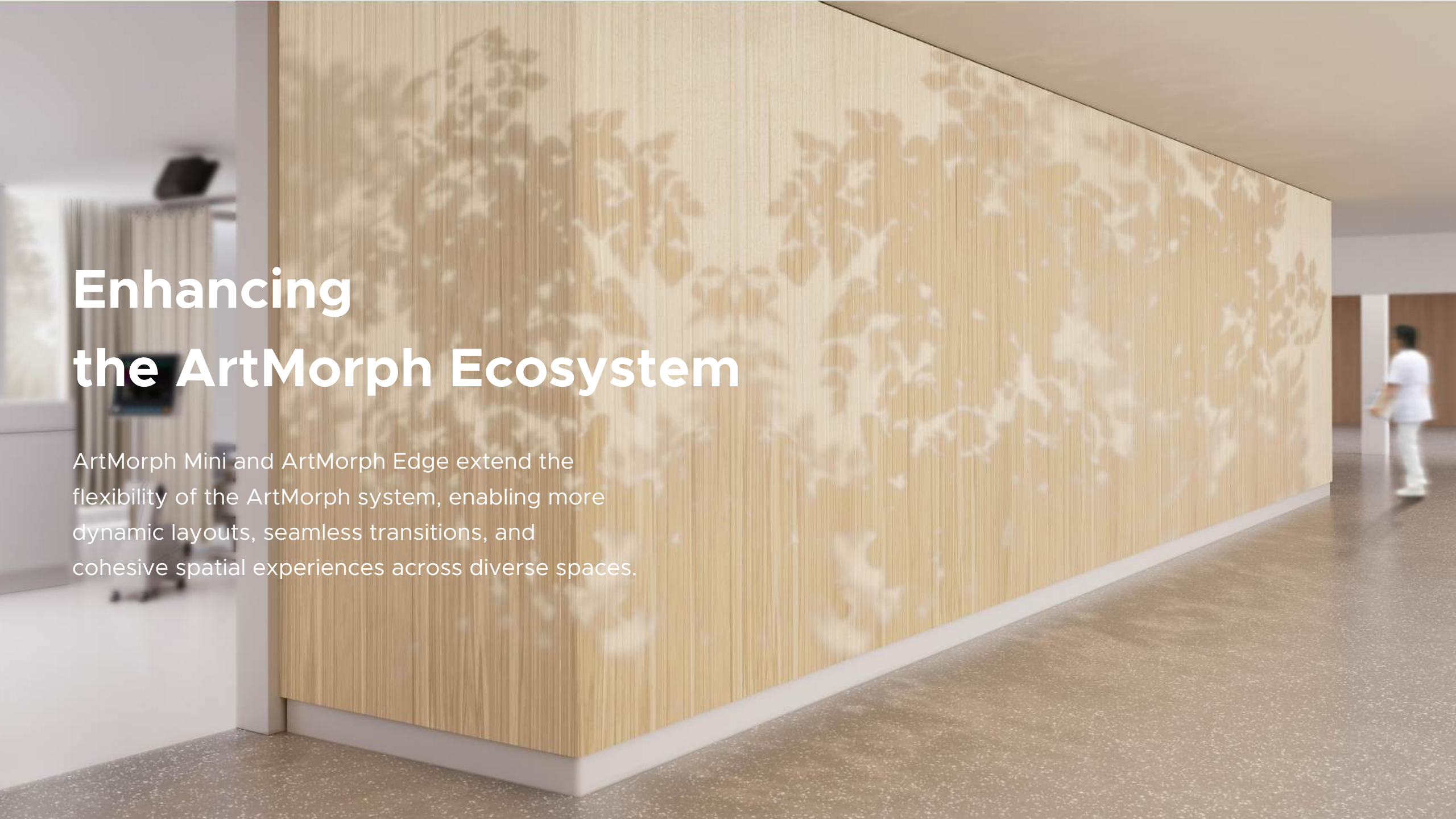
Versatile Applications

- Hospitalities
- Retail stores
- Business settings
- F&B businesses
- Cultural & Public spaces



Enhancing the ArtMorph Ecosystem

ArtMorph Mini and ArtMorph Edge extend the flexibility of the ArtMorph system, enabling more dynamic layouts, seamless transitions, and cohesive spatial experiences across diverse spaces.



ArtMorph Mini

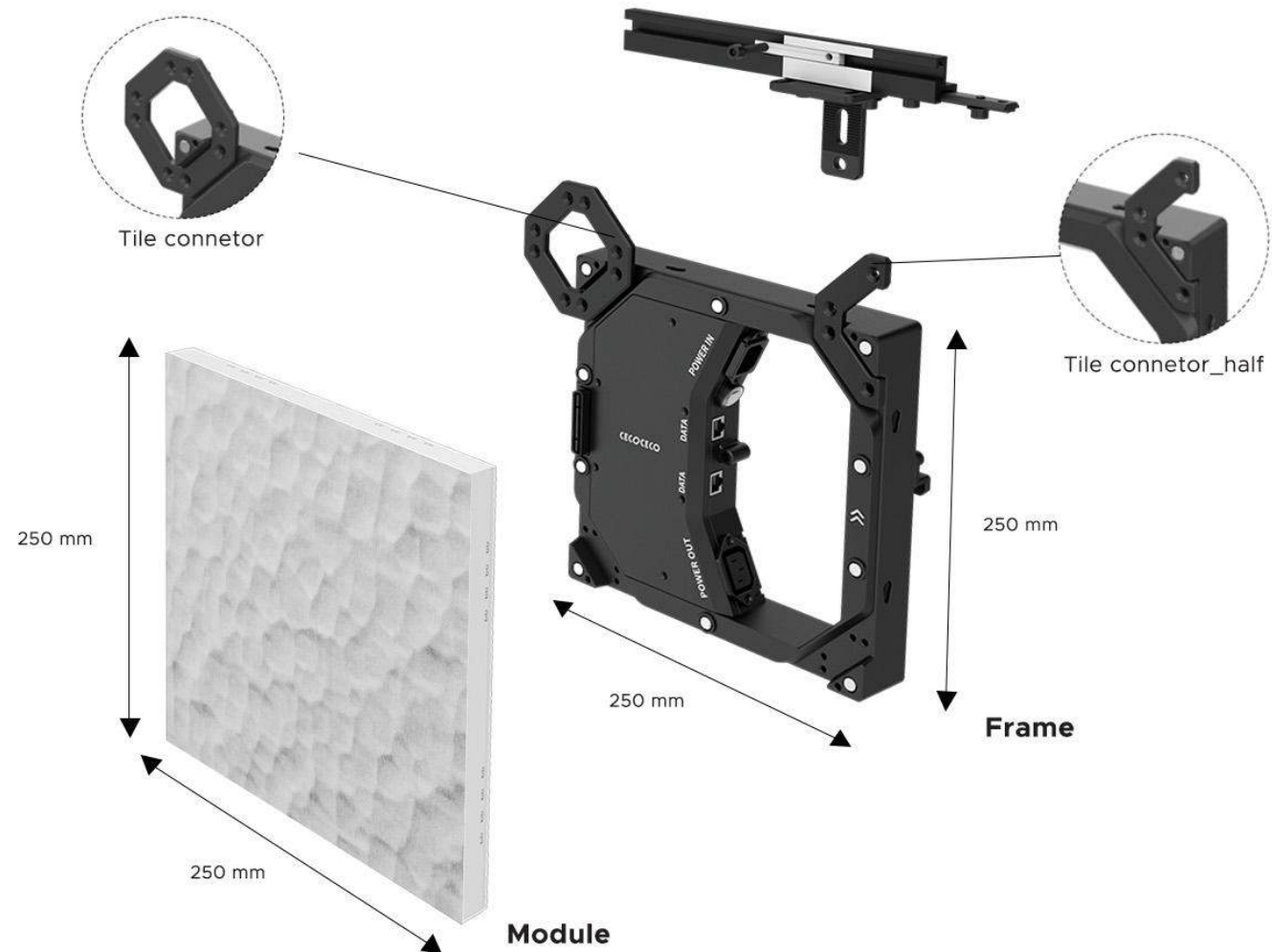
Small Scale. Infinite Possibilities

Compact, adaptable, and powerful, ArtMorph Mini expands the creative potential of the ArtMorph system. Whether completing complex layouts or standing alone as a bold statement, it offers refined solutions for dynamic, space-conscious designs.



Quarter-Size Form Factor (250x250mm)

Fits effortlessly into tight spaces or irregular layouts, offering refined solutions beyond the reach of standard panels.



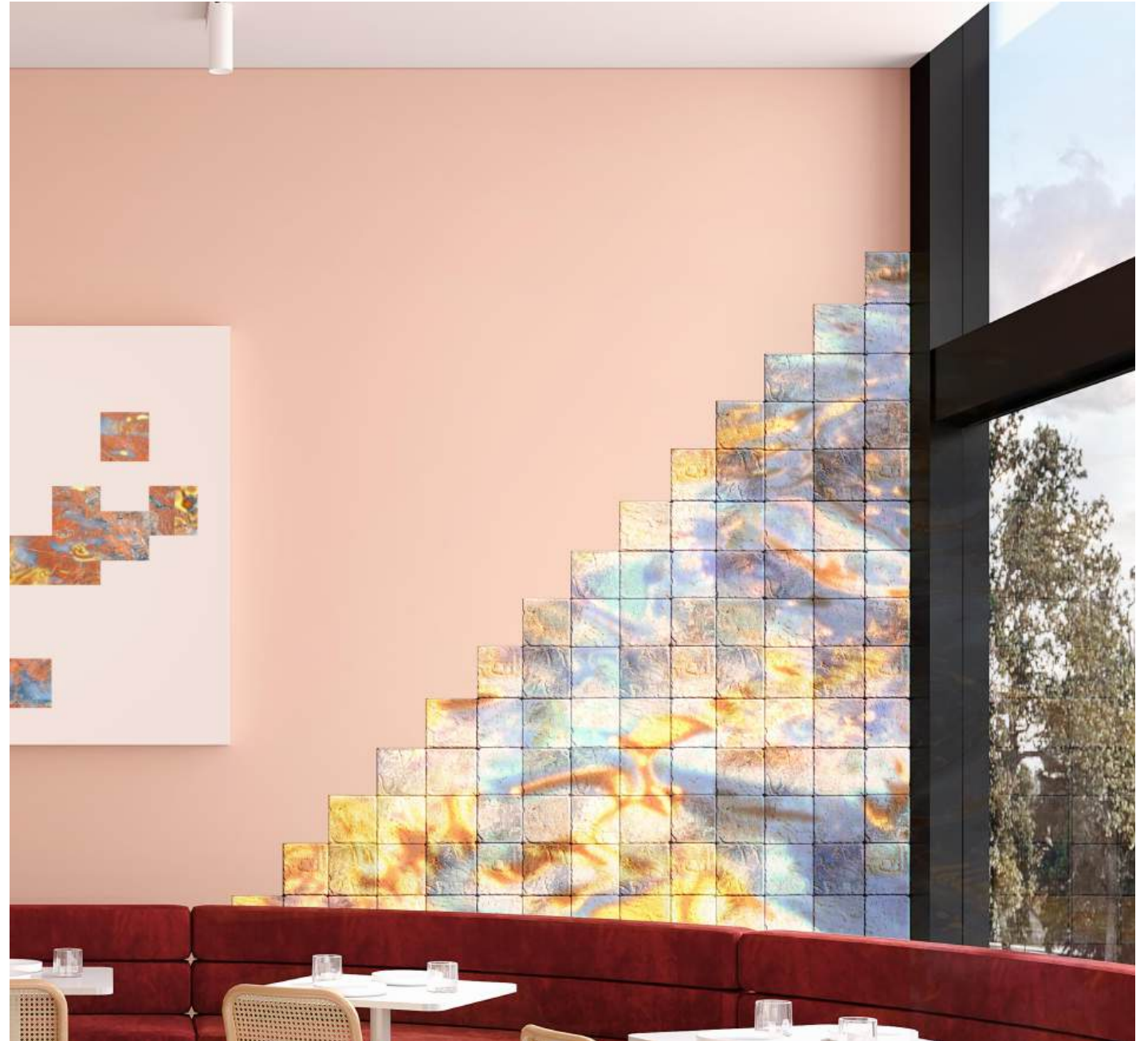
Independent Power System

Allows for creative, non-rectangular compositions when combined with standard ArtMorph, supporting freeform layouts beyond the constraints of conventional grids.



High Surface Compatibility

Shares the same thickness and material options as standard ArtMorph panels, ensuring seamless visual integration or enabling contrast for intentional design highlights.



Versatile Applications

- Spatial Completion
- Creative Assemblies
- Standalone



ArtMorph Edge

Flowing Elegance in Every Corner

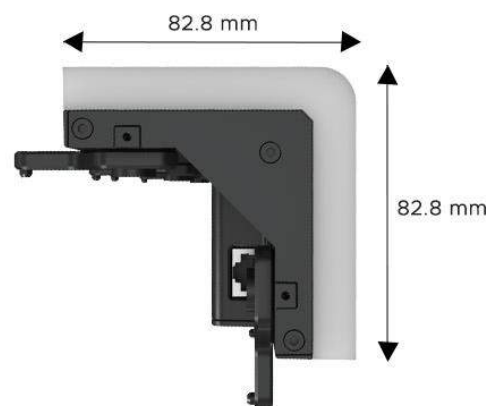
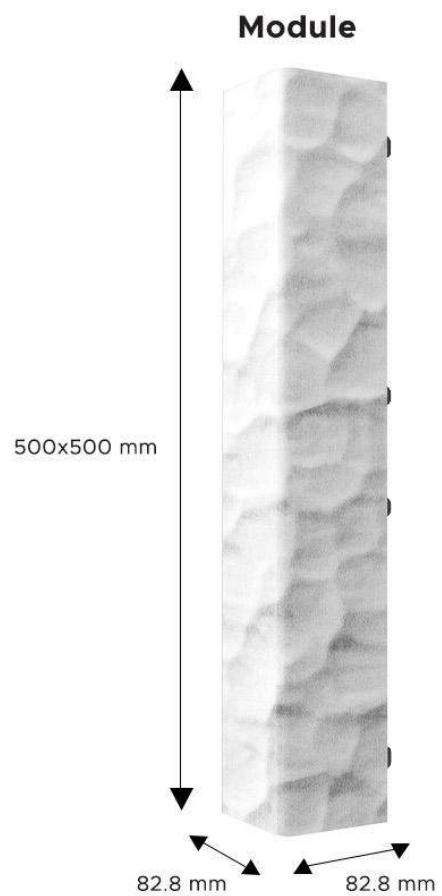
ArtMorph Edge bridges architectural corners with seamless, flowing visual narratives.

By eliminating visual breaks, it enhances spatial continuity and brings a new dimension to immersive storytelling.



Patented Curved-Edge Design

Engineered to eliminate hard panel breaks across 90° transitions, enabling immersive content flow around corners, columns, and wall junctions.



Effortless Plug-and-Play Setup

Draws power and control from adjacent ArtMorph units—streamlining installation without extra cabling.



Surface and Thickness Match

Precisely aligned in material finish and depth with standard ArtMorph and Mini, maintaining visual harmony across complex architectural forms.

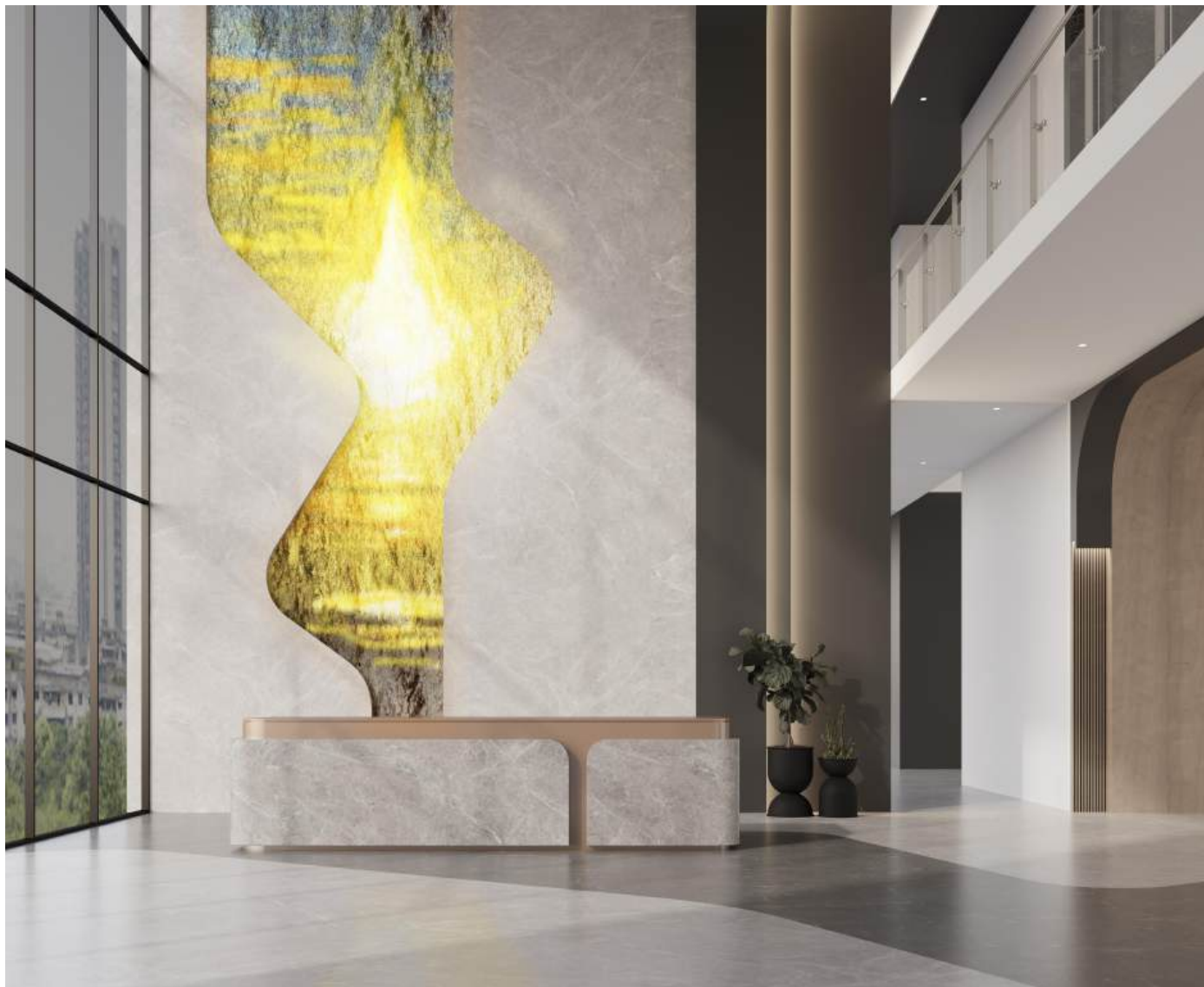


Versatile Applications

- Edge Framing
- Corner Transitions



Scenario Showcases



Hotel Lobby



Restaurant & Bar



Office

Scenario Showcases



Restaurant & Bar



Public Space



Retail Location

Scenario Showcases



Medical Center



Reception



Public Space

Scenario Showcases



Public Space



Restaurant & Bar



Reception

Specifications

	ArtMorph	ArtMorph Mini	ArtMorph Edge
Module Size(WxHxD)	250x250x24.8 mm 9.84"x9.84"x0.97"	250x250x24.8 mm 9.84"x9.84"x0.97"	—
Tile Size(WxHxD)	500x500x77.8 mm 19.69"x19.69"x3.06"	250x250x77.8 mm 9.84"x9.84"x3.06"	82X82X500 mm 3.23"x3.23"x19.69"
Pixel/Tile	80x80 Pixel	40x40 Pixel	25x80 Pixel
Weight/Tile	7 kg	2.4 kg	1.6 kg
Max. Brightness(Nit or CD/m ²)	4500 nits,no surface 700-1200 nits with surface-depending on the surface design		
Max. Power Consumption/m ²	480 W		
Standby. Power Consumption/m ²	10 W		
Operational Temp/Humidity	-20℃~45℃,10%-90% RH		
Storage Temp/Humidity	-40℃~60℃,10%-90% RH		
IP Rating (Front/Rear)	Indoor		



CECOCO

Experience the transformative power of ArtMorph and elevate your space with light, texture, and innovation.

Visit www.cecococo.com to learn more.



Contact@cecococo.com